



# THANECOAT W300GR

**One Component Polyurethane Green Roof Waterproofing Membrane(with root inhibitor)**  
單組份聚胺脂防水塗膜(綠化天台,抗植物植根專用)

## 1.0 Description

THANECOAT W300GR is a high performance elastomeric, one component, moisture curing polyurethane coating containing specially formulated root inhibitor(PREVENTOL B2) which prevents the waterproofing membrane perforated by vegetation. Together with installation of Labond Plants-Cell A928, it forms a tailor-made waterproofing system for Green Roof planting.

## 2.0 Technical Data

	Tested Value	Test Method	Equipment (if any)
Adhesion Strength (without PRIMER)	1.33 N/mm <sup>2</sup>	ASTM4541:95	Pull-off tester T-017-5
Density	1,506 kg/M <sup>3</sup>	ISO1183:1987 Method 620A to 600D:1991	-
Water Absorption (%)	0.75 %	ASTM570-81	OVEN: T-025-6 Water Bath: T-057-7
Tensile Strength	1.539 N/mm <sup>2</sup>	BS2782pt3 Method 320A to 3207:1976	UTM: T-019-2
Elongation at break (%)	406%	DITTO	DITTO
Hardness Scale (Shore A)	46	ASTM2240-00	T-102-1
Anti-corrosion Test (Salt Spray Test)	Passed	BS3900:F12:1997	-
<b>Other In House Test</b>			
Moisture Vapour Transmission	4.235 gms	per m <sup>2</sup> /24 hours	-
Weather meter	2000 hrs	Still pliable, no less of general properties	-

## 3.0 Typical Application

THANECOAT W300GR is a single application product for use on new or old roofs , Terraces, Podium 1 and planters .It can be applied to most surfaces; asphalt, concrete, roofing felt, asbestos, iron sheeting, slate, claytiles, gutters etc.

## 4.0 Application Details

### Preparation :

- All surfaces should be sound, clean, dry, free of dust, oil, grease or other contamination. Loose matter should be removed by abrasion, compressed air or high-pressure water.
- Concrete Surface should have a light steel towel finished or being made flat by a layer of cement/sand screed (Sufficient time for curing C/S should be given before laying of THANECOAT W300GR)
- All Shrinkage and non-moving structural crack under 1.6mm (1/16-inch) shall be pretreated with one coat of THANECOAT W300GR.
- All right angle joints between parapet wall and slabs should be treated with cementitious fillet.

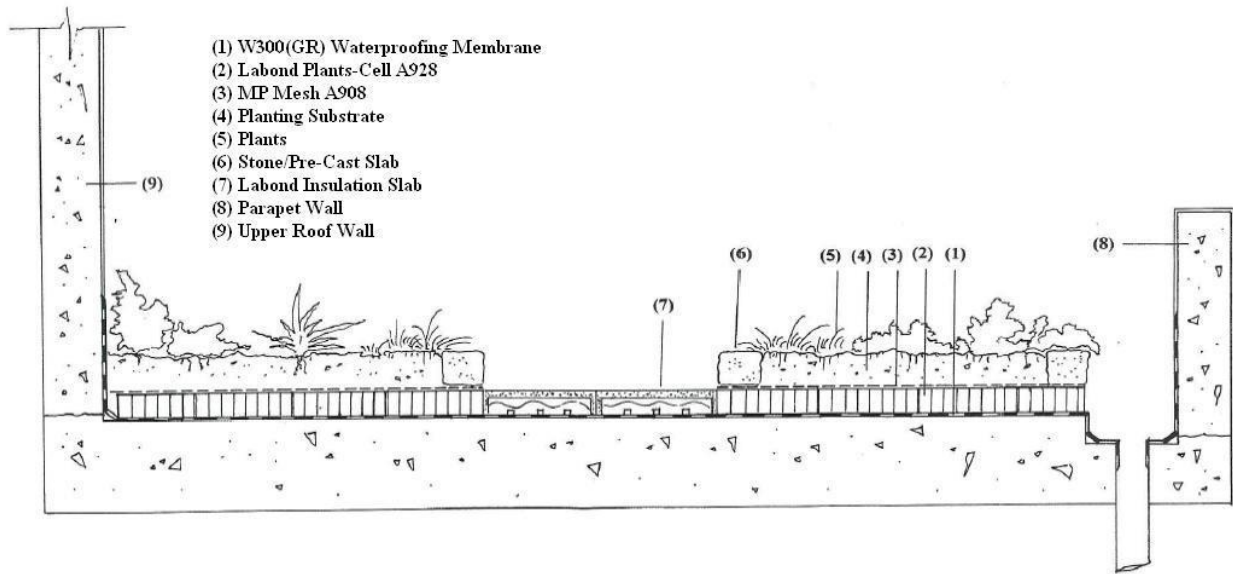
# THANECOAT W300GR Green Roof Waterproofing Membrane



## 5.0 Application Details

Job Diagrams:

### Steps of Application (Planter System)



### Steps of Application

- 2 coats of THANECOAT W300GR + 1 layer of MPMESH A900 or A907 to Skirting, Kerb and/or Horizontal, Vertical surfaces, extending up to inner part of drainage pipes.
- Lay one layer of MPMesh A908 as separation .
- Lay Labond Plants-Cell A928 to the area of future Planting work
- Lay one layer of MPMesh A908 on top of Planters-Cell A908 and shuttered intended the planting area by Stone or Pre-cast Slab
- Lay Planting media and Plants above .

## 6.0 Coverage

@ 3.6 – 4.0 kg / M2 Approx.

\*Vary from surface condition.

## 7.0 Health and Safety

THANECOAT W300GR contains aromatic solvents and is harmful to eyes and skin. Use old or protective clothing and rubber gloves. When spraying, use face visors. Do not smoke in vicinity and allow adequate ventilation.

## 8.0 Cleaning

Tools can be cleaned after use in any aromatic solvent.

## 9.0 Packaging

18kg/Drum, 25kg/Drum

### Technical Advisory Notes

- For liquid applied membrane, it may sometimes encounter problem of “ Blisters” due to trapped air on rough concrete or moisture vapour which are sometimes practically unavoidable. Provided that the small blisters are in low scale and they are not punctured, it is unlikely to affect the overall performance of the system.
- Primers are sometimes required to improve the adhesion between THANECOAT and surface substrate, likes bituminous surface, non-ferrous metal and exceptionally porous substrate. Applicators should consult our technical office for necessary commendation.