



SUPERBOND S535e

Multi-purpose liquid Nail/Adhesive

特殊效能無釘膠

1.0 Description

SUPERBOND S535e is a one part Modified Silicone rubber based solvent-free adhesive which is manufactured to the specification of Master Proofer Company Ltd., it offers superior adhesion strength with wide range of substrates, weatherability, elasticity for tackling vibration of structure.

2.0 Advantage

- Non toxic, Solvent Free, Environmental Friendly;
- Easy to clean;
- Mildew Resistance
- Excellent initial "grab" for accurate bonding;
- Fast setting multi purpose adhesive;
- Can be overpainted;
- Can be used for decorative purpose;
- For filling small cracks and joints

3.0 Technical Data

| | |
|--|---|
| Base Polymer | MS Polymer rubber |
| Storage Condition | Keep dry between 5 ° C & 30 ° C |
| Shelf Life | 12 months @ 25 ° C |
| Application Temperature | 5 ° C to 50 ° C |
| Service Temperature | -20 ° C to 200 ° C |
| Tooling Time @23 ° C 50% RH | 5-10 min. |
| Initial setting Time at 25 ° C and 50%RH | 20 min (initial strength development) |
| Cure Time @23 ° C 50%RH (5mm Diameter) | 1.2 - 24 hours |
| Average Life Expectancy | > 10 years |
| Resistance to Water | Excellent |
| Resistance to UV | Good |
| Flammability | Does not support combustion |
| Shear Strength: | 24 hours – 150psi 48 hours – 180 psi 1 week - 240 psi |
| <u>Adhesive Strength ASTM D45411995</u> | <u>Strength (N/mm²)</u> |
| Concrete / S535e | 0.85 N/mm ² |
| Laminate / S535e | 0.9 N/mm ² |
| Wood / S535e | 0.8 N/mm ² |
| Polystyrene / S535e | 0.6 N/mm ² |
| EDPM/S535e | 0.8 N/mm ² |
| Glass Wool / S535e | 0.35 N/mm ² |
| Rock Wool / S535e | 0.35 N/mm ² |
| Mildsteel (S535/e) | 0.9N/ mm ² |
| Stainsteel (S535/e) | 0.9N/ mm ² |
| Colour | Light Grey |
| Viscosity: | 500,000 cps |
| Percent Volatile | 28% |
| Max VOC: | 70 GPL |
| Tensile Strength, psi | 50 ASTM D 412 |
| Elongation at Break | 200% ASTM D 412 |
| | <u>Failure Mode</u> |
| | 15% Concrete; 85% S535E |
| | 0% Laminate; 100% S535E |
| | 20% Wood; 80% S535E |
| | 50% Polystyrene; 50% S535E |
| | 10% Material; 85% S535E |
| | 100% Glass wool |
| | 100% Rock wool |
| | 10% Material; 85% S535E |
| | 10% Material; 85% S535E |

4.0 Typical Application

For sealing of furniture, exhibition tiles, office fixture, wood work, insulation material etc. For substrate:

- Expanded polystyrene moldings;
- Cornices and insulation panels;
- Flexible PVC;
- Laminates;
- Timber flooring;
- Rock wool/Glass wool;
- Particle board;
- Natural stone;
- Masonry;
- Metals;
- Polystyrene foam;
- Aluminium;
- Plywood;
- Skirting board



MASTER PROOFER S535e

Multi purpose Liquid Nail/Adhesive



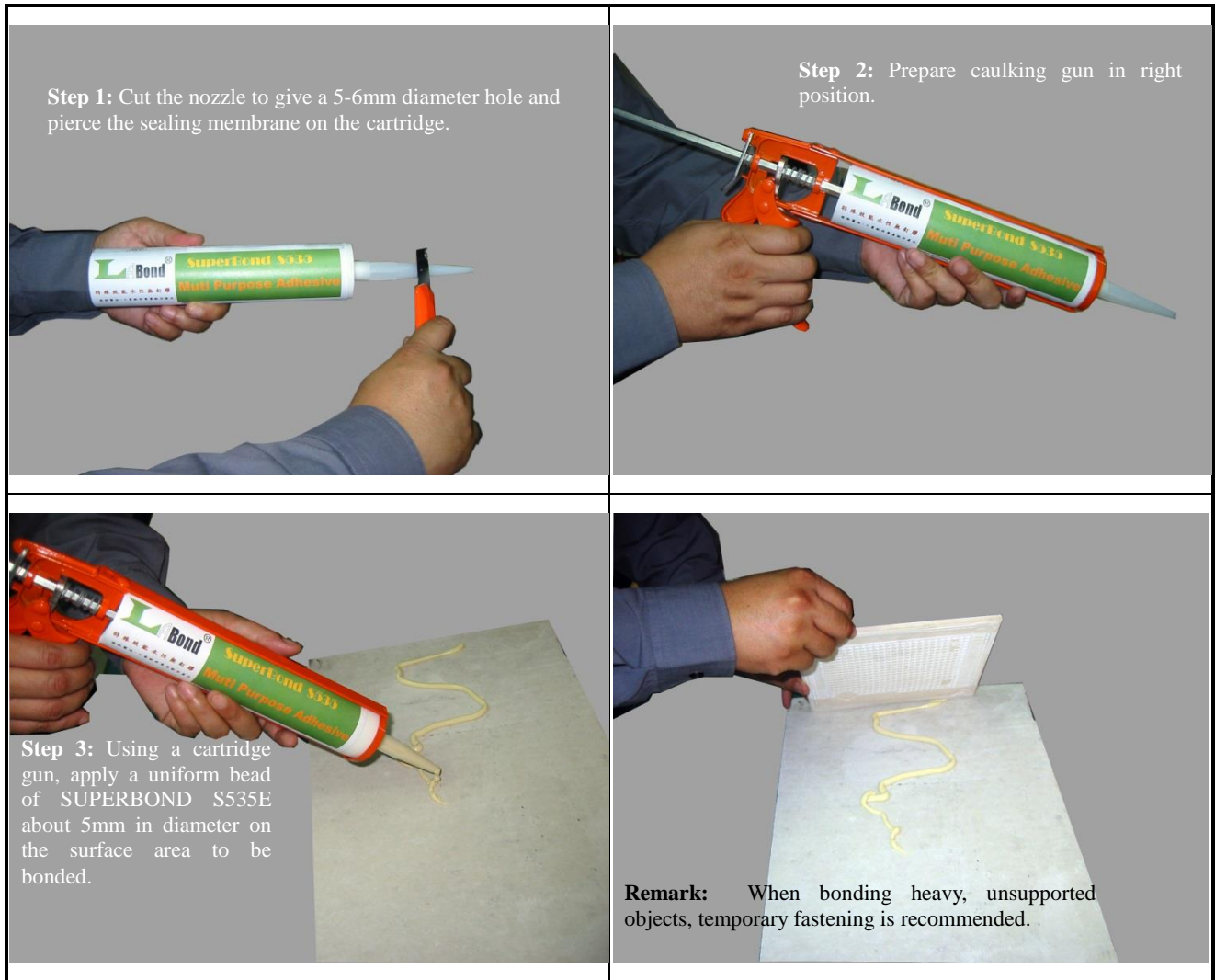
5.0 Preparation

All surfaces should be sound, clean, dry, free of dust, oil, grease or other contamination. Loose matter should be removed by abrasion if necessary finally removing the dust by brush. Oil and grease are removed by the use of a cloth moistened with xylene or approved solvent. The cleaning cloth should be replaced regularly to avoid the redistribution of the contaminates over the surface. Care should be taken to ensure that all protective films and laquers etc is removed prior to the application. For very porous surfaces such as plasterboard, the surface should be primed with Master Proofer Primers and allowed to dry before applying SUPERBOND S535e

6.0 Cleaning tools and equipment

Tools can be cleaned with water.

7.0 Joint Design



8.0 Coverage

For 5mm diameter, it equivalent to 10 meter length approximately.

9.0 Health and Safety

SUPERBOND S535e is irritating to eyes. If eyes are contaminated, wash with plenty of clean water and seek medical advice. For further information, consult relevant Material Safety Data Sheet.

10.0 Technical Service

The Marketing and Technical offices of Master Proofer Company Ltd are readily available for advice on any of the Company's Products.

11.0 Packaging

SUPERBOND S535e is available in 288ml disposable cartridge.