



# 穩步靈 STEPGUARD F222p

## Anti-Slip Floor Treatment Agent for Flooring

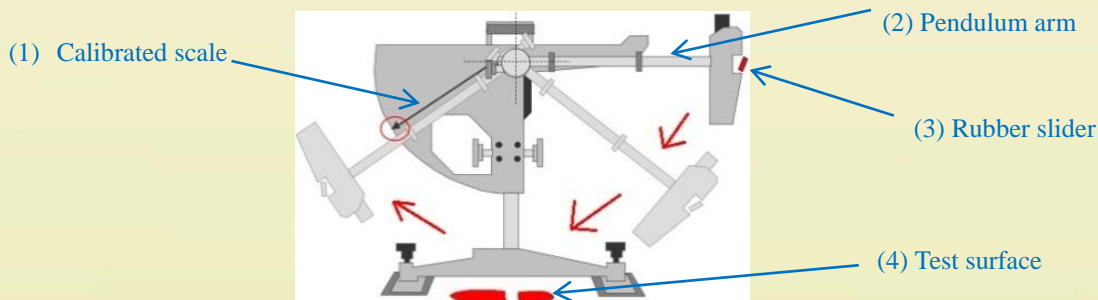
### 1.0 Description

Slips and falls on wet surfaces are a major and regular problem for all types of commercial establishments and residences. STEPGUARD F222p is designed to tackle this costly problem by a safe, quick and professional method to increase the coefficient of friction for most surfaces and thus helps reducing slip injuries. STEPGUARD F222p is easy to apply, low in odour and does not noticeably alter the appearance of the surfaces.

### 2.0 Instrument / Criteria in Defining Slip Potential

The slip/skid resistance of a surface can be measured by the European Standard BS EN 13036-4:2011 using a Pendulum Tester. This test can be directly carried out in the field and the Pendulum Test Value (PTV) can be obtained instantly.

The Pendulum Tester consists of a standard rubber slider (Slider 57 for vehicular traffic/ Slider 96 for shod traffic) mounted on a pendulum arm. When the pendulum arm is released from a horizontal position, the rubber slider passes through the test surface and energy is lost through the process. The slip/skid resistance is reflected by the loss of energy, which is proportional to the reduction in length of the upswing against a calibrated scale and the value obtained is known as the PTV.



Health and Safety Executive (HSE), a non-departmental authoritative public body of the United Kingdom whose report has been used in the common law cases, has published a technical information sheet about “Assessing the slip resistance of flooring” in 2012 and gives the interpretation of pendulum results as follows:

	PTV
High slip potential	0-24
Moderate slip potential	25-35
Low slip potential	36 +

#### Suggestions from Master Proofer Technical Department:

- PTV 0-24: It is unsafe. Arrange a floor treatment as soon as possible.
- PTV 25-35: It is acceptable for normal walking attitude and conditions. Regular check should be performed to avoid the lowering of PTV due to dirt accumulation.
- PTV 36+: It is a comparatively safe surface for normal walking attitude and conditions. A regular check should be performed every year.

\*Apart from the regular instrument calibration, a calibrated rubber slider that is within its validity period should be used in order to obtain a correct PTV. If the pendulum tester cannot be used for testing in some places where the space is not enough, ASM 725 could be used as a reference such that SCOF 0.6 approximately equals to PTV 25-28.

# STEPGUARD F222p Anti-Slip Floor Treatment Agent for Flooring



## 3.0 Indicative Treatment Chart for Various Substrate

Surface Substrate	Approximate Treatment Time	*Expected Increment in PTV	
Porcelain / Enamel Tub	5-15 mins	≤24 → ≤35	>28 → 36+
Porcelain Tile	5-15 mins	≤24 → ≤35	>28 → 36+
Granite	10-30 mins	≤24 → ≤40	>28 → 36+
Terrazzo	15-60 mins	≤24 → ≤40	>28 → 36+
Quarry Tile	15-60 mins	≤24 → ≤40	>28 → 36+
Glazed brick	15-60 mins	≤24 → ≤40	>28 → 36+
Slate	30-60 mins	≤24 → ≤40	>28 → 36+
Ceramic Tile	Matt: 5-20 mins, Gloss: 10-45 mins	≤24 → ≤40	>28 → 36+
Mosaic Tile	15-60 mins	≤24 → ≤40	>28 → 36+

\*The above indicative treatment time acts as a guide only. If the existing substrate has been treated with other chemicals, it might alter our suggested figures. Optimum treatment time can vary depending upon the surface involved. Always perform a test in an out-of-way area to verify the proper treatment time for a particular floor. Do not treat exceed 60 minutes. Do not apply STEPGUARD F222p on those surfaces where sealers or other coating has been treated before. Treatment may slightly lighten dark grout, please perform a test to ascertain if it is acceptable.

## 4.0 Testing Example

MaterialLab (Fugro Technical Service) Test Report No.	Surface Substrate	PTV Before Treatment of F222p	PTV After Treatment of F222p
160912SF1601497	Mosaic Tile 1	18	34
160912SF1601497	Ceramic Tile 1	31	44
160913SF1601548	Ceramic Tile 2	26	49
160913SF1601548	Ceramic Tile 3	21	45
160913SF1601548	Ceramic Tile 4	23	50



Mosaic Tile 1



Ceramic Tile 1



Ceramic Tile 2



Ceramic Tile 3



Ceramic Tile 4



## 5.0 Application

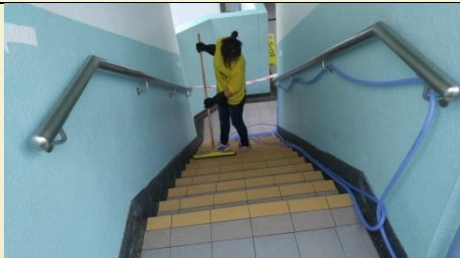
- Put on rubber gloves.
- Sweep the floor. Clean the floor surface by an appropriate cleaning agent (e.g. LABond FLEXCLEAN F223).
- Flush away the cleaning agent by water (Pressurized water jet within 40-80 psi could be used.) Dry the floor surface by using a squeegee or towel.
- Half fill a large plastic bucket with LABond STEPGUARD F222p. By using a mop or lamb's wool applicator, spread evenly over areas to be treated.
- Ensure that floor surface is always evenly wet with LABond STEPGUARD F222P during the entire treatment time or otherwise the liquid will evaporate and cause spots to appear on the treated surface when the job is done.
- At the end of application, rinse the floor well with clean water several times until all bubbles are gone. Remove the remaining water with a squeegee, wet vacuum or auto scrubber and dispose the waste appropriately.



(1) Dilute LABond FLEXCLEAN F223 according to the technical instruction.



(2) Use appropriate tools to clean the floor by F223.



(3) Flust away the cleaning agent by water and dry the floor surface



(4) Pour out appropriate amount of LABond STEPGUARD F222p (Do not dilute, please refer to the coverage for each kind of surface)



(5) Use appropriate tools to apply F222p. Continuously check and resupply F222p to ensure that the surface will not dry out.



(6) Final cleaning after treatment and appropriate disposal.

## 6.0 Health and Safety

STEPGUARD F222p may be stored in a cool closet. Do not allow to freeze. Keep out of reach of children and animals. Avoid applying on a surface in direct sunlight. The heat will congeal the product and thus causing spots.

## 7.0 Technical Service

It is recommended to employ Master Proofer's qualified applicator for this product treatment. The technical office of Master Proofer Company Ltd is readily available for advice on any LABOND's Product Range.

## 8.0 Packaging and Coverage

3.78 Litre / Plastic Drum

Coverage: Terrazzo (12 Sq. Meter / Litre)

Granite (18 Sq. Meter / Litre)

Porcelain tile / Glazed brick / Slate / Ceramic tile (20 Sq. Meter / Litre)