



LABOND C100/s

Waterproof High Strength Tile Grout

瓦磚接口填縫灰(俗稱掃口粉或勾縫劑)

1.0 Description

LABOND C100/s is a read-mix pre-bagged grouting mortar with high strength and waterproof characteristics. It can be applied between tiles up to a thickness of 12mm (maximum) on interior and exterior walls as well as on floors. LABOND C100/s is available in either Grey and White or other colour based on requirement .

2.0 Technical Data

Density	1.12kg/L
Component	Portland cement, non-reactive aggregate, graded sand and other chemical additives
Max. aggregate size	0.3 mm
Water demand	Approx. 25% – 28% or 6.3 – 7 L/25kg bag
Density	1.1 g/cm ³
Pot life	Approx. 1 hour
Coverage	Approx. 1.5 kg/m ² /mm

3.0 Physical Properties

Abrasion resistance	EN 12808-2	< 1,000 mm ³
Compressive strength	EN 12808-3 After dry storage	> 15 N/mm ²
	After freeze-thaw cycle	> 15 N/mm ²
Flexural strength	EN 12808-3 After dry storage	> 3.5 N/mm ²
	After freeze-thaw cycle	> 3.5 N/mm ²
Linear shrinkage	After 24 hours (ANSI A 118.6-1992)	< 0.5 mm/m
	After 7 days (ANSI A 118.6-1992)	< 1.5 mm/m
	After 28 days (EN 12808-4)	< 2 mm/m
Water absorption	EN 12808-5 After 30 mins	<2g
	After 240 mins	<5g
Water absorption	ANSI A 118.6-1992 50% R.H. to immersion	<5%
	Immersion to dry	<7%
Resistance to mould growth	BS 5980 : 1980 JC/T 547 : 1994	No mould growth
Tensile strength	BS 5980 : 1980	> 1500 N

3.01 Complied Standards

European Norm	: EN 13888 : 2002 Class CG2
British Standard	: BS 5980 : 1980 Part 7. 9
Chinese Standard	: JC/T 547:1994
American Standard	: ANSI A118.6 : 1992

LABOND C100/S

Waterproof High Strength Tile Grout



Joint width is an important factor to define white grain aggregate is required. Labond C100 denote that no aggregated is added. Labond C100S denote that aggregates has been mixed to tackle joint width larger than 3mm. please refer chart as follow: -

C100 Grout (Width ≤3mm)				C100s Grout (Width ≥3mm)					
Grout Estimation Chart (For Internal Use Only)				Grout Powder (kg) Estimation Chart per m ² (For Internal and External Use)					
TILE SIZE (mm)	JOINT WIDTH			TILE SIZE (mm)	JOINT WIDTH				
	1.5mm	3mm	Width > 3mm not recommended		3mm	6mm	12mm	15mm	
50 x 50 x 6	0.8	1.6			200 x 200 x 10	--	1.4	2.3	--
100 x 100 x 6	0.4	0.8			240 x 115 x 15	--	2.9	5.8	--
150 x 150 x 6	0.3	0.6			300 x 300 x 8	--	0.8	1.6	--
200 x 100 x 6	0.3	0.6			300 x 300 x 10	--	1.0	2.0	--
300 x 300 x 10	0.3	0.5							

*** This chart is for estimating purposes only. Job site coverage may vary.**

4.0 Typical Application

LABOND C100 is designed to be applied on top of all types of tile-adhesives/stone-adhesives/slab-adhesives. It is highly recommended to be applied in conjunction with LABOND C103 tile adhesive or other relevant LABOND Adhesive Products

5.0 Application details

Preparation and Application Area :

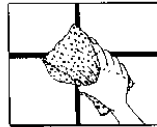
- 4.1 The surface must be solid and free of those materials likes grease and dust.
- 4.2 Mixing Ratio: (a) General Area - C100 : Add water 5 - 6 L to 25Kgs/ bag;
C100s : Add water 4.5 – 5.5L to 25kgs/bag
- (b) Swimming Pool or area subject to continuous water immersion and those area clone to seashore : C100 : Add 2-3L(water) + 2.5L(C106) + 25Kgs/ bag(C100);
C100s : Add 1.5L(water) + 2.5L(C106) + 25Kgs/ bag(C100s)

6.0 Application Mixing

Apply LABOND C100/s evenly on the substrate with a rubber float or similar tool. Remove product in excess with a sponge and then finish off with a piece of dry cloth.



Work grout into joints using a spatula or sponge.



Clean excess grout with wet sponge.



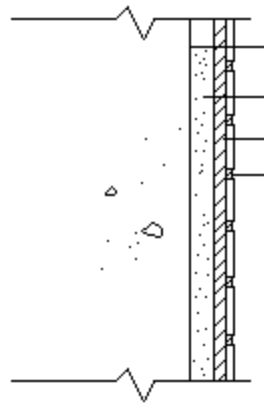
Clean with dry cloth.

LABOND C100/S Waterproof High Strength Tile Grout



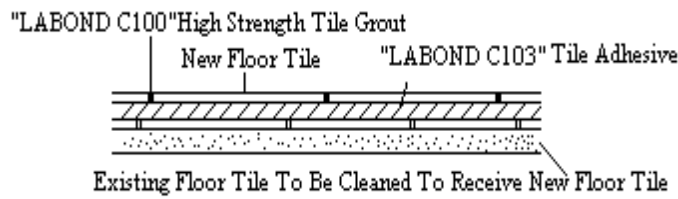
7.0 Application Diagram

Typical I

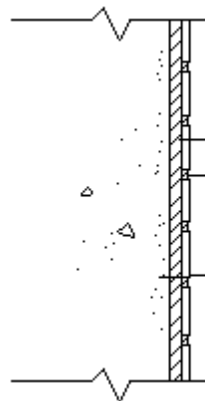


One coat "CORALATEX C106A" Adhesive coat
"CORALATEX C106A-01"
"LABOND C103" Tile Adhesive
"LABOND C100" High Strength Tile Grout

Typical II



Typical III



"LABOND C103" Tile Adhesive
"LABOND C100" High Strength Tile Grout
Good Alignment Concrete

8.0 Technical Services

The Technical office of MASTER PROOFER COMPANY LTD are available for advice on any of LABOND's products.

9.0 Packaging

25 Kg / Bag